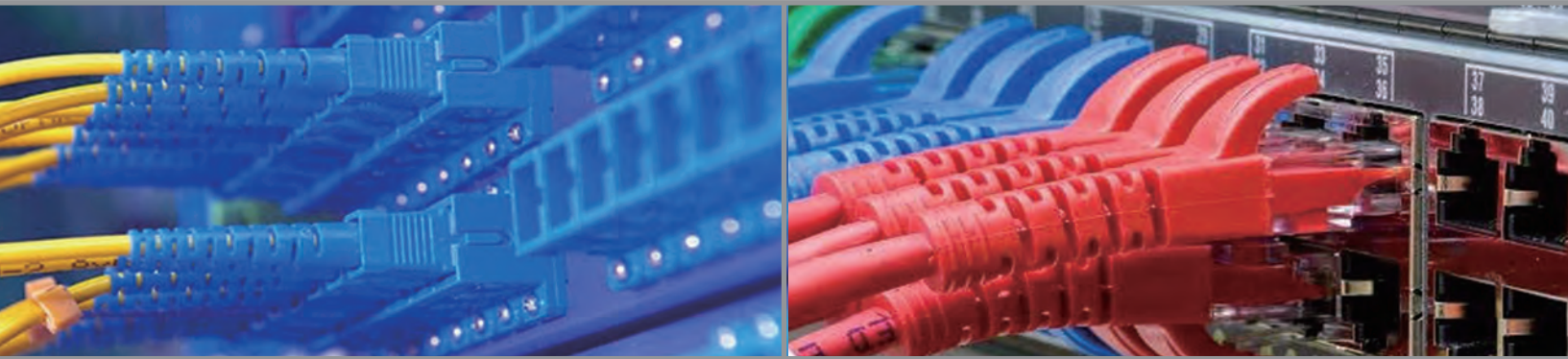


CABLING

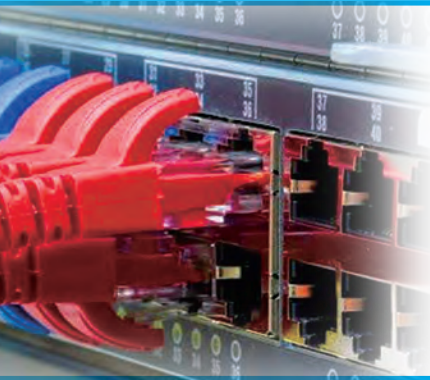
Fiber Optic & Copper Solutions



DINTEK
LAN CABLING SYSTEMS



● PowerMAX-XLR8™ Cat.8 Cabling Systems

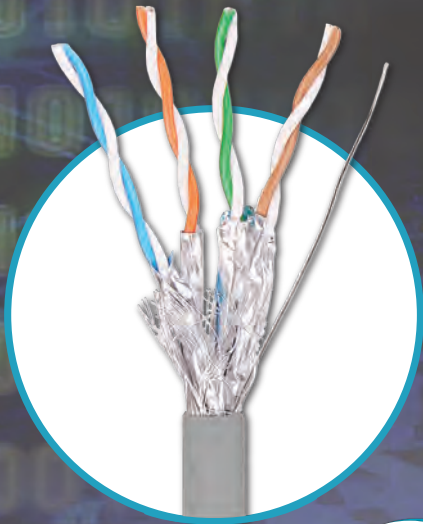


The DINTEK XLR-8™ Category 8 cabling system has been specifically designed to support today's data center needs for 25GBase-T and 40GBase-T transmission. With enhanced electromagnetic interference (EMI) protection as well as offering superior alien crosstalk suppression and minimal insertion loss, the DINTEK XLR8™ Category 8 system meets and exceeds the latest ISO and ANSI/TIA standards to provide today's network professional with the ideal choice for a high bandwidth low loss data transmission platform.

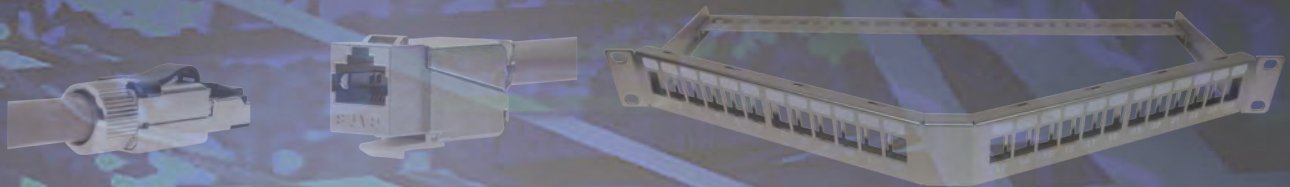


PowerMAX-XLR8™

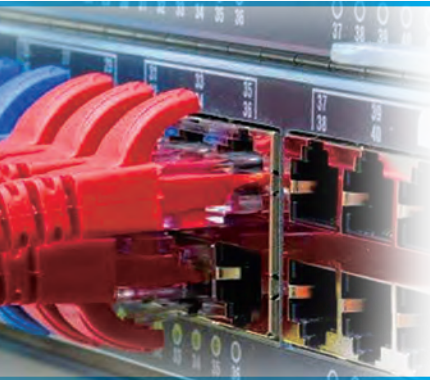
**PREPARE FOR
TAKEOFF**



CATEGORY 8



PowerMAX+™ Cat.6A Cabling Systems



The DINTEK PowerMAX+™ CAT.6A range of shielded and unshielded products have been designed to support 10 Gigabit Ethernet. Installed as an end-to-end solution, and warrantied under our DCI Installer program for 25yrs, DINTEK PowerMAX+™ CAT.6A products are an obvious choice for providing an optimum speed, structured cabling solution.

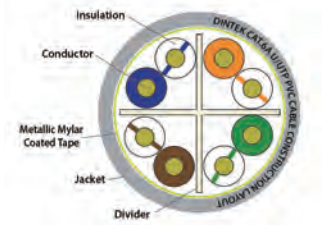


Cat.6A U/UTP Cable

Cat.6A F/UTP Patch Cord

Cat.6A ezi-JACK

Cat.6A Patch Panel



P/N : 1101-06XXX (PVC)
P/N : 1101-06XXX (LSZH)
 ETL,EC Certified
 Cat.6A U/UTP Cable, 4 Pairs
 23AWG, Solid
 Pkg: 305M/ Reel

P/N : 1201-06XXX
 RJ45 Plug 50u" gold,
 Cat.6A F/UTP, 4 Pairs 26AWG,
 Stranded
 Color: Gray
 Length: 1, 2, 3, 5 meters

P/N : 1305-05008 (Horizontal)
P/N : 1305-05020 (Vertical)
 UL,ETL Certified, Component level
 Cat.6A ezi-JACK can use ezi-TOOL
 and 110 punch down tool
 Pkg: 600 pcs/ Ctn

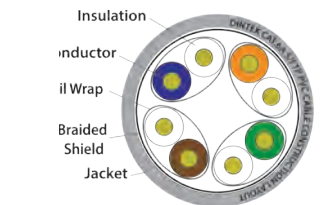
P/N : 1406-00011 (24P)
 Cat.6A 19" Patch Panel,
 Snap-in type, rotatable
 cable manager 1U 24P

Cat.6A Shielded Cable

Cat.6A S/FTP Patch Cord

Cat.6A Shielded ezi-JACK

Cat.6A Shielded Panel



P/N : 1103-06XXX (F/UTP)
P/N : 1105-06XXX (S/FTP)
P/N : 1105-06XXX (U/FTP)
 UL,ETL Certified
 Cat.6A Shielded Cable, 4 Pairs
 23AWG, Solid
 Pkg: 305M/ Reel

P/N : 1201-06XXX
 RJ45 Plug 50u" gold,
 Cat.6A S/FTP, 4 Pairs 26AWG,
 Stranded
 Color: Gray
 Length: 1, 2, 3, 5 meters

P/N : 1305-05010 (Vertical)
P/N : 1305-05017 (Toolless)
 UL,ETL Certified, Component level
 Cat.6A Fully shielded ezi-JACK can
 use ezi-TOOL and 110 punch down
 tool
 Pkg: 600 pcs/ Ctn

P/N : 1406-00012 (24P)
 Cat.6A 19" Patch Panel,
 Snap-in type, with cable manager
 1U 24P metal

PowerMAX™ Cat.6 Cabling Systems



The DINTEK PowerMAX™ Cat.6 range of products are guaranteed to exceed 1 Gbps (and 10Gbps up to 70M) transmission speed. Our PowerMAX™ solution comprises Cat.6 component level patch panels and keystone. When matched with our PowerMAX500™ twisted pair cable and installed by a certified DINTEK installer it provides an end-to-end cabling system that will support its users for at least 25years.

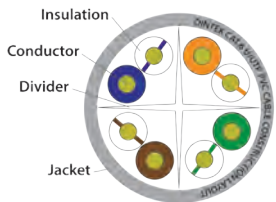


Cat.6 U/UTP Cable

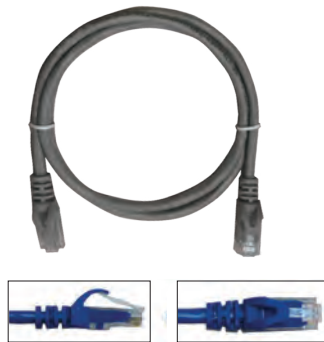
Cat.6 Patch Cord

Cat.6 ezi-JACK

Cat.6 Patch Panel



P/N : 1101-04XXX (PVC)
P/N : 1101-04XXX (LSZH)
 UL,ETL Certified
 Cat.6 U/UTP, 4 Pairs 23AWG & 24AWG, Solid
 Pkg: 305M/ Box



P/N : 1201-04XXX
 RJ45 Plug 50u" gold, molded boots
 Cat.6 U/UTP, 4 Pairs 24AWG, Stranded
 Color: Red, Ora., Yel., Gre., Blue & Gray
 Length: 1, 2, 3, 5 meters



P/N : 1305-04XXX (Horizontal)
P/N : 1305-04XXX (Vertical)
 UL,ETL Certified, Component level
 Cat.6 ezi-JACK can use ezi-TOOL and 110 punch down tool
 Pkg: 600 pcs/ Ctn



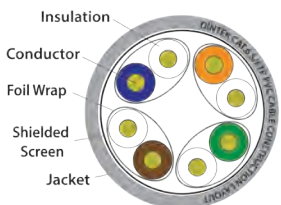
P/N : 1402-04011 (110/Krone)
 19" patch panel, Modular type
 Accepts 22-26AWG stranded or solid wire, with color label
P/N : 1406-00041 (Snap-in type)
 19" patch panel, Snap-in type
 work with ezi-JACK

Cat.6 Shielded Cable

Cat.6 S/FTP Patch Cord

Cat.6 Shielded ezi-JACK

Cat.6 Shielded Panel



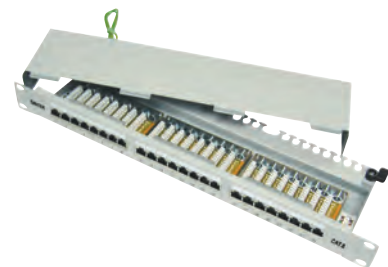
P/N : 1103-04XXX (F/UTP)
P/N : 1107-04XXX (S/FTP)
P/N : 1107-04XXX (U/FTP)
 UL,ETL Certified
 Cat.6 Shielded Cable, 4 Pairs 23AWG, Solid
 Pkg: 305M/ Reel



P/N : 1201-04XXX
 RJ45 Plug 50u" gold, molded boots
 Cat.6 S/FTP, 4 Pairs 26AWG, Stranded
 Color: Gray
 Length: 1, 2, 3, 5 meters

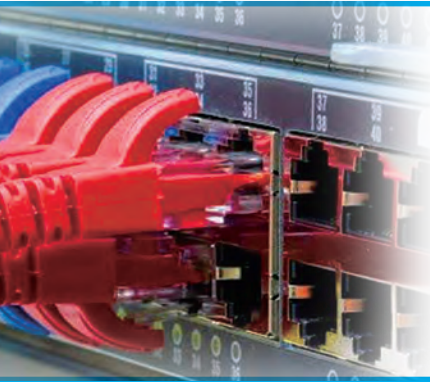


P/N : 1305-04048 (Vertical)
 UL,ETL Certified, Component level
 Cat.6 Fully shielded ezi-JACK can use ezi-TOOL and 110 punch down tool
 Pkg: 600 pcs/ Ctn



P/N : 1402-04033 (24P)
 Cat.6 19" 110/ Krone type fully shielded patch panel, 24 ports, 1U size, Component level

PowerPRO™ Cat.5e Cabling Systems

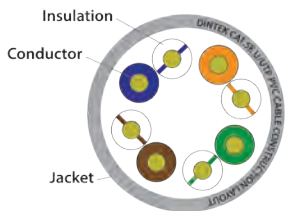
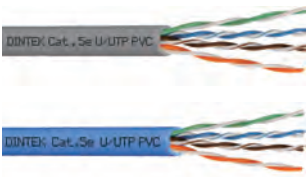


DINTEK's PowerPRO™ Enhanced Category 5 end-to-end twisted pair cabling solution is designed and guaranteed to exceed 1 Gbps transmission speed.

Our PowerPRO™ solution comprises Category 5e component level patch panels and keystone. When matched with our PowerPRO™ twisted pair cable and installed by a certified DINTEK installer it provides an end-to-end cabling system that will support its users for at least 25years.



Cat.5e U/UTP Cable



P/N : 1101-03XXX (PVC)
P/N : 1101-03XXX (LSZH)
 UL,ETL Certified
 Cat.5e U/UTP, 4 Pairs 24AWG, Solid
 Pkg: 305M/ Box

Cat.5e Patch Cord



P/N : 1201-03XXX
 RJ45 Plug 50u" gold, molded boots
 Cat.5e U/UTP, 4 Pairs 24AWG, Stranded
 Color: Red,Ora.,Yel.,Gre.,Blue & Gray
 Length: 1, 2, 3, 5 meters

Cat.5e ezi-JACK



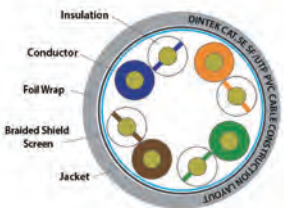
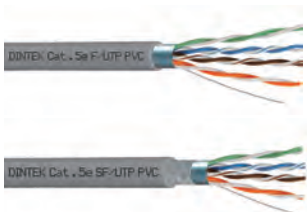
P/N : 1305-03XXX (Horizontal)
P/N : 1305-03XXX (Vertical)
 UL,ETL Certified, Component level
 Cat.5e ezi-JACK can use ezi-TOOL
 and 110 punch down tool
 Pkg: 600 pcs/ Ctn

Cat.5e Patch Panel



P/N : 1402-03019 (1U 24P)
 Cat.5e 19" 110/ Krone type
 Patch Panel 24 ports, 1U size,
 Component level

Cat.5e Shielded Cable



P/N : 1103-03XXX (F/UTP)
P/N : 1105-03XXX (SF/UTP)
 UL,ETL Certified
 Cat.5e Shielded Cable, 4 Pairs
 24AWG, Solid
 Pkg: 305M/ Reel

Cat.5e F/UTP Patch Cord



P/N : 1201-03XXX (F/UTP)
 RJ45 Plug 50u" gold, molded boots
 Cat.5e F/UTP, 4 Pairs 24AWG, Stranded
 Color: Gray
 Length: 1, 2, 3, 5 meters

Cat.5e Shielded Jack



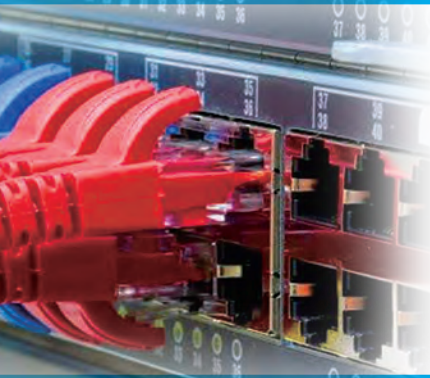
P/N : 1305-03023 (Horizontal)
P/N : 1305-03024 (Vertical)
 UL,ETL Certified, Component level
 Cat.5e 110/ Krone type fully
 shielded keystone Jack

Cat.5e Shielded Panel



P/N : 1402-03022 (24P)
 Cat.5e 19" 110/ Krone type
 fully shielded patch panel,
 24 ports, 1U size,
 Component level

● DuraMAX Industrial Cabling Systems

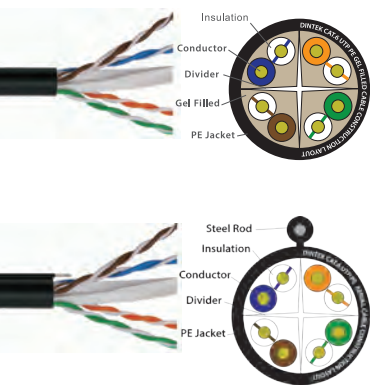


Our DuraMAX Industrial Products can withstand exposure to the most adverse conditions including high temperatures, risk of physical contact, oil, and chemicals.

- Meets IP67 standard
- Meets UL 1863 compliant
- Operating Temperature : -25°C to +75°C



Outdoor U/UTP Cable



P/N : 1101-04XXX (with Gel)
P/N : 1101-04XXX (with Rod)
 PowerMAX Outdoor Cat.6 U/UTP 23AWG Solid Cable, PE Jacket
 Pkg: 305M/ Reel

UTP Patch Cord



P/N : 1201-04161 (1M)
P/N : 1201-04162 (2M)
P/N : 1201-04163 (3M)
P/N : 1201-04164 (5M)
 DuraMAX-67 Cat.6 UTP IP67 Component Level Patch Cord

Keystone Jack



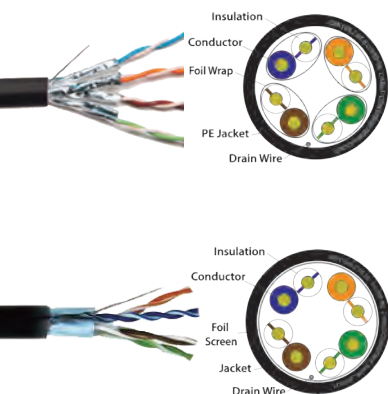
P/N : 1305-04051
 DuraMAX-67 Cat.6 UTP IP67 Component Level Keystone Jack

Mounting Box



P/N : 1304-00001 (1P)
P/N : 1304-00002 (2P)
 DuraMAX-67 Mounting Boxes
 • Stainless steel surface providing anti-corrosive and waterproof protection
 • Contains face plate & back mounting box kit

Outdoor Shielded Cable



P/N : 1103-04XXX
 PowerMAX Outdoor Cat.6 U/FTP 23AWG Solid Cable, PE Jacket
 Pkg: 305M/ Reel
P/N : 1103-03XXX
 PowerPRO Outdoor Cat.5e F/UTP 24AWG Solid Cable, PE Jacket
 Pkg: 305M/ Reel

Shielded Patch Cord



P/N : 1201-04157 (1M)
P/N : 1201-04158 (2M)
P/N : 1201-04159 (3M)
P/N : 1201-04160 (5M)
 DuraMAX-67 Cat.6 FTP IP67 Component Level Patch Cord

Shielded Keystone Jack



P/N : 1305-04050
 DuraMAX-67 Cat.6 FTP IP67 Component Level Keystone Jack

Faceplate



P/N : 1303-00001 (1P)
P/N : 1303-00002 (2P)
 DuraMAX-67 US Style IP67 Face Plate
 • Stainless Steel Construction
 • US faceplate Style dimensions

● Outlets & Modules



DINTEK offers a complete range of wall plates to cover a multitude of country specific designs and port density.



CurvaPlate-US type

Surface Mount Box

Multimedia Box

Adaptor & Coupler



P/N : 1303-11XXX

Material: ABS, white color
70 x 120 mm, can fit with
Cat.5e/ 6/ 6A ezi-JACK
Pkg: 300 pcs/ Ctn



P/N : 1301-02012CH (1P)

P/N : 1301-02013CH (2P)

Surface Mount Box with Spring
Shutter

Material: ABS, white color

Pkg:

1P(65x48x27mm): 200 pcs/ Ctn

2P(65x76x27mm): 120 pcs/ Ctn



P/N : 1301-01011 (6P Box)

P/N : 1306-05006 (BNC Insert)

P/N : 1306-08005 (RCA Insert)

P/N : 1306-11001 (S-Video Insert)

P/N : 1306-02006 (F Insert)

P/N : 1306-03006 (ST Insert)

P/N : 1306-07006 (SC Insert)

P/N : 1306-07006 (SC Insert)



P/N : 1701-01028

Cat.6 inline coupler unshielded

P/N : 1701-01029

Cat.6 inline coupler shielded

P/N : 1701-01033

Cat.6 90 degree coupler shielded

P/N : 1701-01036

Cat.6 inline block to block type
unshielded

CurvaPlate-UK type

CurvaPlate-UK type

Wallplate-UK type

In-Wall Box



P/N : 1303-12036 (1P)

P/N : 1303-12037 (2P)

Material: ABS, white color
86 x 86 mm, can fit with
Cat.5e/ 6/ 6A ezi-JACK
Pkg: 300 pcs/ Ctn



P/N : 1303-12040 (1P)

P/N : 1303-12041 (2P)

Material: ABS, white color
86 x 86 mm, 45 degree, can fit
with Cat.5e/ 6/ 6A ezi-JACK
Pkg: 300 pcs/ Ctn



P/N : 1303-12011 (1P)

P/N : 1303-12010 (2P)

Wallplate with shutter
Material: ABS, white color
86 x 86 mm, 45 degree, can fit
with Cat.5e/ 6/ 6A ezi-JACK
Pkg: 200 pcs/ Ctn



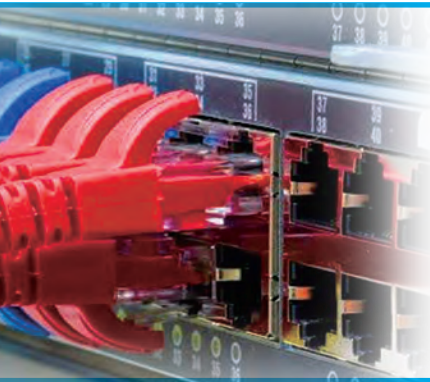
P/N : 1304-11004

Material: ABS, white color
38 x 70 x 114 mm, can fit with
Faceplate-US types

P/N : 1304-12001

Material: ABS, white color
38 x 87 x 87 mm, can fit with
Wallplate-UK types

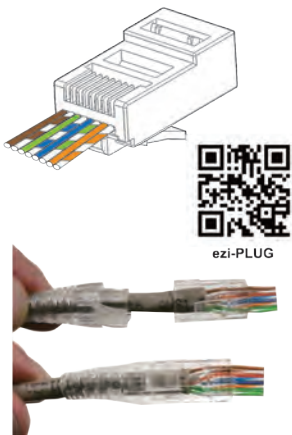
RJ45 Plugs & Boots



The Pass Through RJ45 ezi-Plug

- Gold plating 50u" is guaranteed
- The DINTEK Pass Through RJ45 ezi-PLUG™ is designed to maintain the twists as close to the point of termination as possible. This significantly decreases crosstalk and markedly increases performance
- The RJ45 ezi-LOCK™ locking solution for RJ45 plugs is the ideal solution for protecting your vital link from being accidentally disconnected

Pass-Through ezi-Plug



ezi-PLUG

P/N : 1501-88060

Cat.6 RJ45 Plug 50u" gold,
For solid and stranded core cables
Simplifies terminations & reduces
mistakes
Technician can easily verify the
proper wiring order.
Reduces the distance between the
wire twists and contacts.

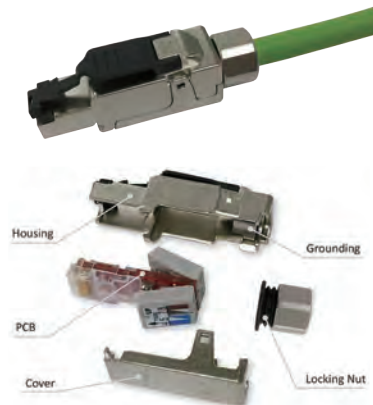
CAT.6 RJ45 Plug



P/N : 1501-88XXX

RJ45 Plug for UTP/ FTP &
Solid/ Stranded Cable
Housing: Poly-carbonate
Contact material: Phosphor
bronze alloy
Contact: Copper alloy 50u" gold
over nickel

Field Terminable Plug



P/N : 1505-05001

Cat.6A STP field termination
capability
Industrial strength body casing
Compatible with Cat.6A component
performance
Fully shielded metal housing
guarantees secure and reliable
transmission performance

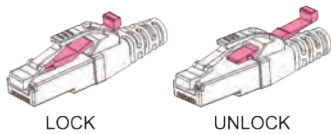
360° Terminable Plug



P/N : 1505-05005

Cat.6A STP 360° 4-Position field
termination capability
Industrial strength body casing
Compatible with Cat.6A
component performance

RJ45 ezi-LOCK

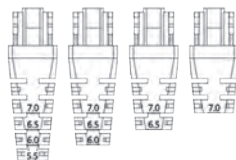
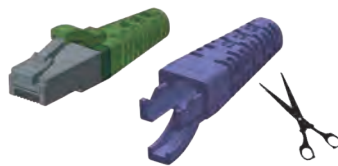


ezi-LOCK Boot

P/N : 1601-00008 (6.5Φ)

Compatible with all industry
standard Cat.5e and Cat.6
RJ45 Plugs.
Enhances network security
and up-time.
Prevents accidental discon-
nection on critical connections.

Multi-Use ezi-BOOT

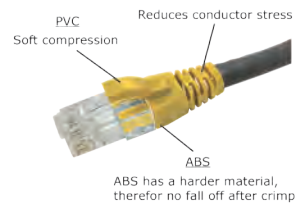


Multi-use for $\varnothing 5.5 \sim \varnothing 7.0$

P/N : 1601-0XXXX

Cable jacket sizes can be used
between 5.5mm to 7.0mm
Materials are ABS+PVC
Designed to be crimped with
the DINTEK RJ45 Modular Plugs.

Strain Relief RJ45 Boot



P/N : 1601-0XXXX (5.8/6.5Φ)

Two jacket sizes: 6.5Φ for Cat.6
and 5.8Φ for Cat.5e Cable
Materials are ABS+PVC
PVC is maintaining proper bend
radius on stranded cable.
Color: Red, Ora., Yel., Gre., Blue & Gray

IP67 Plug Housing



P/N : 1501-88035 (FTP)

P/N : 1501-88036 (UTP)
Cat.6 IP67 Plug Housing
Endures high UV, humidity,
oily and acidic environments
Meets IP67 standard
Meets UL 1863 compliant
Operating Temperature :
-25°C to +75°Cm.

● Networking Tools



Our tools are designed to operate precisely and effectively, reducing re-work costs and overall project implementation time.

	00:05	00:37	00:39	00:40	00:41	00:43
1. Terminate						
2. Crimp						
3. Cut						
Done!						

ezi-TOOL



E-TOOL

P/N : 6103-01005(red cutter)
ezi-TOOL, for horizontal type ezi-JACK

P/N : 6103-01006(yellow cutter)
ezi-TOOL, for vertically type ezi-JACK

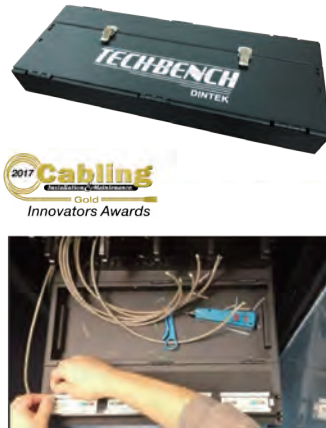
All-in-one Punch down of 8 wires even wire trim process

Stripper



P/N : 6101-05004
Strips jacket of Cat.5e/6/6A cables. Equipped with cable cutting function. Adjustable knob is for stripping cable O.D. from 4 to 7mm.

TECHBENCH Kit



P/N : 8204-03001
With TECHBENCH, the installer mounts the bench on the front of the cabinet, and by doing this there is much less excess cabling required, and all of the space allowance of being in front of the cabinet.

Professional Testers



P/N : 6201-01005
The DCT-020 testers provide continuity, length, QC test, PoE test & wire tracing. Also included is an optical power meter and VFL.

P/N : 6201-01006
The DCT-010 is an ideal entry level tester, providing wiremap, QC and PoE testing of cables.

Pass Through Tool



YouTube

P/N : 6102-01021
Pass Through ezi-PLUG Crimp Tool crimps and trims wires in a single cycle. One RJ45 blade is spare for replacement. Crimping for RJ12(6P) and RJ45 (8P) plug, suitable for solid and stranded wire.

RJ45 Crimping Tool



P/N : 6102-01001 (Right)
Heavy duty & professional type Modular holders are made of ZN. Alloy light weight & durable.

P/N : 6102-01002CH (Left)
Crimping for RJ12(6P) and RJ45 (8P) plug, suitable for solid and stranded wire.

19" Angle Panel



P/N : 1406-00XXX
19" 0.5U 24P blank angle panel
19" 1U 24P blank angle panel
19" 2U 48P blank angle panel

Cable Management



P/N : 2304-0XXXX
Organize cables on the front and/or back of the rack an extremely neat. Large capacity duct to allow quick shifting, adding and changing cables.

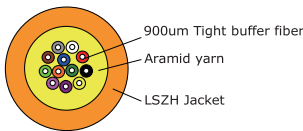
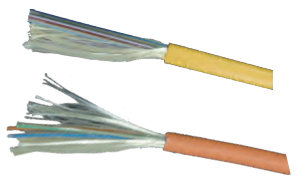
● Light-LINKS™ Fiber Optic Cabling System



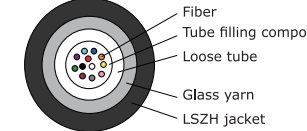
Light-LINKS Fiber Optic Cable

- Our tight buffered fiber has excellent flame-retardant performance
- The outer jacket material is anti-corrosive and environmentally friendly
- Fiber Type: 50/125um, 62.5/125um, G652D, G657A1/A2, and OM3/4
- Complies with YD/T 1258.4, ICEA-596, GR-409, IEC 60794-2-20/21, PVC meet OFNR and OFNP, LSZH meet IEC 60332-1 or 60332-3C

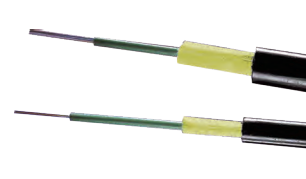
Indoor Fiber Optic Cable



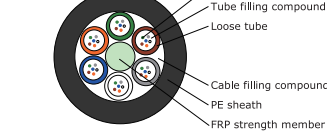
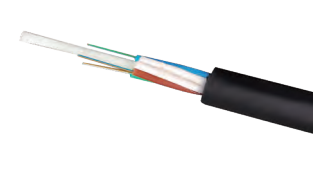
Indoor/Outdoor Fiber Cable



Indoor/Outdoor Fiber Cable



Outdoor Dielectric Fiber Cable



- P/N : 2101-01XXX (9/125um)
- P/N : 2101-02XXX (50/125um)
- P/N : 2101-03XXX (62.5/125um)
- P/N : 2101-04XXX (OM3)
- P/N : 2101-05XXX (OM4)

LSZH Jacket, Tight Buffer Type
Fiber Count: 4, 6, 8, 12 & 24C
Pkg: 2km/ reel

- P/N : 2102-01XXX (9/125um)
- P/N : 2102-02XXX (50/125um)
- P/N : 2102-03XXX (62.5/125um)
- P/N : 2102-04XXX (OM3)
- P/N : 2102-05XXX (OM4)

LSZH Jacket, Loose Tube Type
Fiber Count: 2 ~24C
Pkg: 2km/ reel

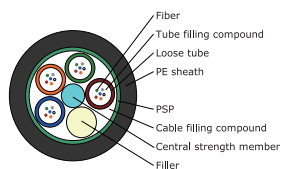
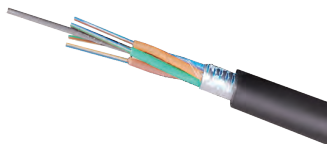
- P/N : 2102-01XXX (9/125um)
- P/N : 2102-02XXX (50/125um)
- P/N : 2102-03XXX (62.5/125um)
- P/N : 2102-04XXX (OM3)
- P/N : 2102-05XXX (OM4)

LSZH Jacket, Loose Tube Type
Fiber Count: 2 ~24C
Pkg: 2km/ reel

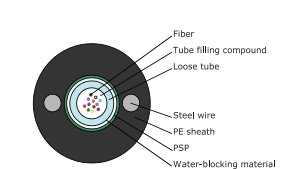
- P/N : 2103-01XXX (9/125um)
- P/N : 2103-02XXX (50/125um)
- P/N : 2103-03XXX (62.5/125um)
- P/N : 2103-04XXX (OM3)
- P/N : 2103-05XXX (OM4)

PE Jacket, Loose Tube Type
Fiber Count: 2 ~96C
Pkg: 2km/ reel

Outdoor Armor Fiber Cable



Outdoor Armor Fiber Cable



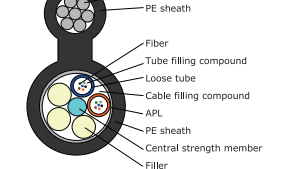
- P/N : 2103-01XXX (9/125um)
- P/N : 2103-02XXX (50/125um)
- P/N : 2103-03XXX (62.5/125um)
- P/N : 2103-04XXX (OM3)
- P/N : 2103-05XXX (OM4)

PE Jacket, Loose Tube Type
Fiber Count: 2 ~144C
Pkg: 2km/ reel

- P/N : 2103-01XXX (9/125um)
- P/N : 2103-02XXX (50/125um)
- P/N : 2103-03XXX (62.5/125um)
- P/N : 2103-04XXX (OM3)
- P/N : 2103-05XXX (OM4)

PE Jacket, Loose Tube Type
Fiber Count : 2 ~24C
Pkg : 2km/ reel

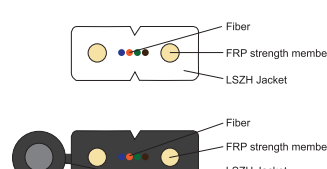
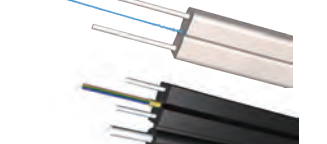
Outdoor self-support Cable



- P/N : 2103-01XXX (9/125um)
- P/N : 2103-02XXX (50/125um)
- P/N : 2103-03XXX (62.5/125um)
- P/N : 2103-04XXX (OM3)
- P/N : 2103-05XXX (OM4)

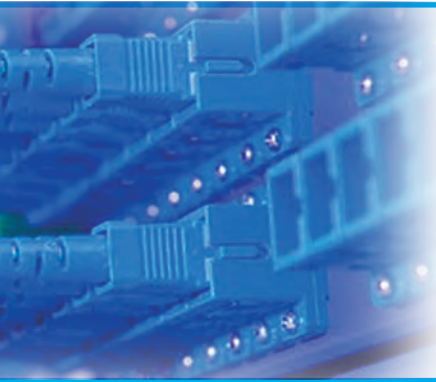
PE Jacket, Loose Tube Type
Fiber Count : 2 ~30C
Pkg : 2km/ reel

FTTH Drop Cable



- P/N : 2101-01028 (2C)
- P/N : 2101-01029 (4C)
- Indoor SM, G657A2, LSZH Jacket White
- P/N : 2103-01049 (2C)
- P/N : 2103-01050 (4C)
- Outdoor SM, G652D, LSZH Jacket Black, Steel wire

● Light-LINKS™ Fiber Optic Cabling System



UsConec MTP Elite works with better performance.

- 12F/24F available to support 40G/100G Ethernet interfaces.
- Single-mode angled polishing makes precise alignment.

Light-LINKS™ Patch Cords/Pigtail

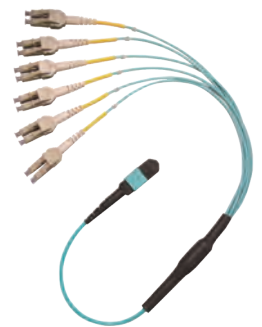
- OS2 SM: Cost-effective for data center connection.
- OM1/OM2 MM: For Fast Ethernet, Gigabit Ethernet.
- OM3/OM4 MM: For data center 40G and 100G transmission.
- OM5 MM: For data center 100G and 400G transmission.

MTP Trunk Cable

MTP Patch Cord

MTP Fan-Out Cable

Outdoor Dielectric Fiber Cable



P/N : 2104-22XXX

US Conec MTP Elite Male/Female
Insertion loss SM/MM ≤ 0.35 dB
OS2 10m-100m, LSZH Yellow
OM3 10m-100m, LSZH Aqua
OM4 10m-100m, LSZH Purple
Fiber Count: 8,12,24& 32C

P/N : 2104-22XXX

US Conec MTP Elite Male/Female
Insertion loss SM/MM ≤ 0.35 dB
OS2 1m-10m, LSZH Yellow
OM3 1m-10m, LSZH Aqua
OM4 1m-10m, LSZH Purple
Fiber Count: 8,12,24& 32C

P/N : 2104-20XXX

US Conec MTP Elite Male/Female
to LC Simplex/Duplex
Insertion loss SM/MM ≤ 0.35 dB
OS2 1m-10m, LSZH Yellow
OM3 1m-10m, LSZH Aqua
OM4 1m-10m, LSZH Purple
Fiber Count: 8,12,24& 32C

P/N : 2104-20XXX

US Conec MTP Elite Male/Female
to LC Uniboot
Insertion loss SM/MM ≤ 0.35 dB
OS2 1m-10m, LSZH Yellow
OM3 1m-10m, LSZH Aqua
OM4 1m-10m, LSZH Purple
Fiber Count: 8,12,24& 32C

OM3/OM4 Patch Cord

OM3/OM4 Patch Cord

OM3/OM4 Patch Cord

OM1/OM2 Patch Cord



P/N : 2104-07XXX

LC/LC Duplex Patch cord
100% tested for insertion loss
Insertion loss ≤ 0.2 dB typical
OM3 1m-30m, LSZH Aqua
OM4 1m-30m, LSZH Purple

P/N : 2104-15XXX

LC/SC Duplex Patch cord
100% tested for insertion loss
Insertion loss ≤ 0.2 dB typical
OM3 1m-30m, LSZH Aqua
OM4 1m-30m, LSZH Purple

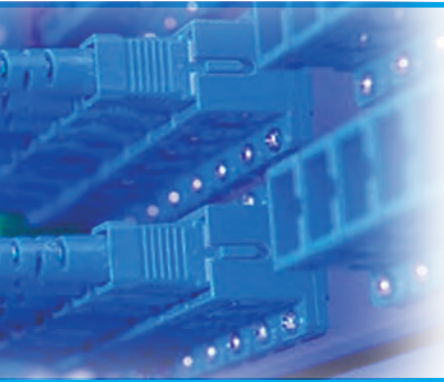
P/N : 2104-03XXX

SC/SC Duplex Patch cord
100% tested for insertion loss
Insertion loss ≤ 0.2 dB typical
OM3 1m-30m, LSZH Aqua
OM4 1m-30m, LSZH Purple

P/N : 2104-01XXX (ST/ST)
P/N : 2104-02XXX (SC/ST)
P/N : 2104-03XXX (SC/SC)

OM1/OM2 Duplex Patch cord
100% tested for insertion loss
Insertion loss ≤ 0.2 dB typical
Length 1m-30m, LSZH Orange

● Light-LINKS™ Fiber Optic Cabling System



Light-LINKS™ adapters OM2, 3, 4, 5

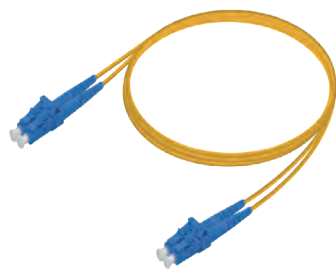
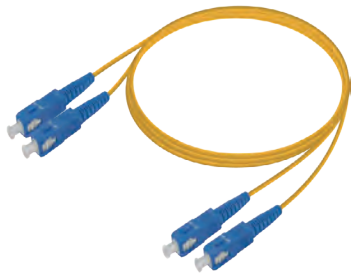
- Low Insertion Loss $\leq 0.2\text{dB}$
- All LC use PEI plastic for high intensity and chemical resistance.
- Snap-in connector design precises mechanical dimensions.
- Comply Telcordia GR-326, IEC, RoHS2, REACH, UL94V-0 standard

OS2 Patch Cord

OS2 Patch Cord

Pigtail

Pigtail



P/N : 2104-03XXX

SC/SC Duplex Patch cord
100% tested for insertion loss
Insertion loss $\leq 0.15\text{dB}$ typical
OS2 1m-30m, LSZH Yellow

P/N : 2104-07XXX

LC/LC Duplex Patch cord
100% tested for insertion loss
Insertion loss $\leq 0.15\text{dB}$ typical
OS2 1m-30m, LSZH Yellow

P/N : 2105-02XXX (SC Pigtail)
P/N : 2105-07XXX (LC Pigtail)

SC, LC Pigtails, Length 1m
100% tested for insertion loss
Insertion loss $\leq 0.2\text{dB}$ typical MM
Insertion loss $\leq 0.15\text{dB}$ typical SM
OS2, OM1/OM2 LSZH White
OM3 LSZH Aqua, OM4 LSZH Purple

P/N : 2105-01XXX (ST Pigtail)

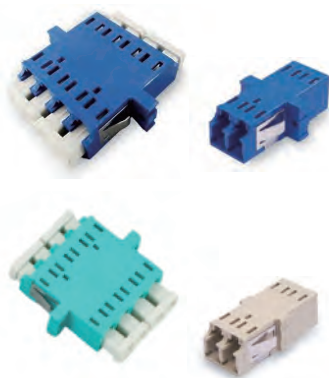
ST Pigtails, Length 1m
100% tested for insertion loss
Insertion loss $\leq 0.2\text{dB}$ typical MM
Insertion loss $\leq 0.15\text{dB}$ typical SM
OS2, OM1/OM2 LSZH White

LC Quad Inner Shutter

LC Quad/Duplex

SC Duplex/Simplex

FC/ST



P/N : 2107-07XXX (Flangeless)

Insertion loss $\leq 0.2\text{dB}$ typical
Plastic: OS2-Blue, OM1/OM2-Beige
OM3-Aqua, OM4-Purple
Inner Shutter design:
• Protect eye exposure from laser light in the field.
• Block out external dust for interior protection.

P/N : 2107-07XXX (Flangeless)
P/N : 2107-07XXX (Flange)

Non-welded design enhances the structure durability.
Insertion loss $\leq 0.2\text{dB}$ typical
Plastic: OS2-Blue, OM1/OM2-Beige
OM3-Aqua, OM4-Purple

P/N : 2107-03XXX (Flangeless)
P/N : 2107-03XXX (Flange)

Non-welded design enhances the structure durability.
Insertion loss $\leq 0.2\text{dB}$ typical
Plastic: OS2-Blue, OM1/OM2-Beige
OM3-Aqua, OM4-Purple

P/N : 2107-01XXX (ST)
P/N : 2107-05XXX (FC)

Metal adapters containing Zirconia sleeve, MM
Insertion loss $\leq 0.2\text{dB}$ typical

● Light-LINKS™ Fiber Optic Cabling System



Light-LINKS™ ezi-PANEL and MaxiFIBER high density fiber solutions provide a robust foundation for building high-speed, reliable network infrastructures that can grow with your technological needs. Whether upgrading an existing setup or constructing a new facility, these solutions offer the flexibility, performance, and scalability essential for modern networking demands.

ezi-PANEL™ Solution

Unloaded Panels

Copper Cassettes

Fiber Cassettes



The ezi-PANEL™ Solution consists of 4 slot and 8 slot 1U unloaded patch panels, into which a mix of copper and fiber optic cassettes can be used to provide multiple media configurations in the same 1U patch panel.

P/N 2201-04001
1U - 4 Slot unloaded patch panel

P/N 2201-08001
1U - 8 Slot unloaded patch panel

P/N 1310-01001
Cat.6 Unshielded 6 Port Cassette

P/N 1310-02001
Cat.6 Shielded 6 Port Cassette

P/N 1310-03001
Cat.6a Shielded 6 Port Cassette

P/N 2111-02XXX
SC Unloaded & Unloaded Fiber Cassettes OM3,4,5 & OS2

P/N 2111-01XXX
LC Unloaded & Unloaded Fiber Cassettes OM3,4,5 & OS2

Maxi-FIBER™ Solution

Enclosures

Fiber Cassettes

Patch & Trunk Cables



DINTEK's MaxiFIBER™ solution takes fiber optic connectivity to the next level. Designed for maximum density and minimal footprint, MaxiFIBER™ accommodates a large number of fiber connections in a compact format.

P/N 2209-00001
1U - 144 Port Fiber Enclosure

P/N 2209-00002
2U - 288 Port Fiber Enclosure

P/N 2209-00004
4U - 576 Port Fiber Enclosure

P/N 2113-01XXX
24 Port LC High Density fiber optic cassettes. Utilizing 6 cassettes per 1U enclosure space.

Available in OM3, OM4, OM5, OS2 (UPC), and OS2 APC

MaxiFIBER™ fiber patch cords available using either our shortened uni-boot style, or our push-pull unit boot style.

MaxiFIBER™ MPO/MTP trunk cables in lengths from 5m to 100m

● Light-LINKS™ Fiber Optic Cabling System



40G QSFP+ / 100G QSFP28 Cable

- Copper (DAC): 40G Passive 0.5M ~ 5M
100G Passive 0.5M ~ 5M
- Optical Fiber (AOC): 40G 1M~100M (OM3 / OM4)
100G 1M~50M (OM3), 1M~100M (OM4)

10G SFP+ / 25G SFP28 Cable

- Copper (DAC): 10G/ 25G Passive 0.5M ~ 5M
- Optical Fiber (AOC): 10G/ 25G 1M~100M (OM3 / OM4)

10G SFP+ AOC

40G QSFP+ AOC

40G QSFP+ AOC

40G Transceiver



P/N : 2710-11XXX

10G SFP+ Active Optical Cable
Hot Pluggable, 850nm VCSEL,
Multi-Mode, 1~300M
10GBASE-SR Ethernet Link
Data Center Networking

P/N : 2710-13XXX

40G QSFP+ Active Optical Cable
Hot Pluggable, 850nm VCSEL,
Multi-Mode, 1~100M
40GBASE-SR4 Ethernet Link
Data Center Networking
Network storage systems

P/N : 2710-13XXX

40G QSFP+ to 4x10G SFP+
Active Optical Cable
Hot Pluggable, 850nm VCSEL,
Multi-Mode Breakout Cable 3~100M
40GBASE-SR4, 10GBase-SR
Ethernet Link
Data Center Networking

P/N : 2708-03XXX

40G QSFP+ SR4 Transceiver,
Hot Pluggable, MPO/MTP-12C,
850nm VCSEL,
Multi-Mode, 100M(OM3), DDM
40GBASE-SR4 Ethernet Link
Data Center Networking
Network storage systems

10G SFP+ DAC

40G QSFP+ DAC

40G QSFP+ DAC

100G Transceiver



P/N : 2710-01XXX

10G SFP+ Direct Attach Cable,
Hot Pluggable, Twinax Copper
Cables, 0.5~15M
10GBASE Ethernet Link
Data Center Networking

P/N : 2710-03XXX

40G QSFP+ to QSFP+ Direct Attach
Cable, Hot Pluggable, Copper Cable,
1M~10M
40GBASE Ethernet Link
Data Center Networking
Network storage systems

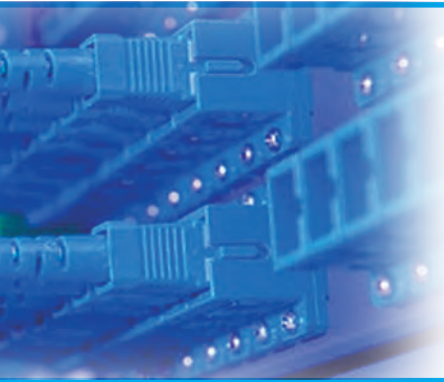
P/N : 2710-03XXX

40G QSFP+ to 4x10G SFP+ Direct
Attach Cable, Hot Pluggable,
Copper Breakout Cable, 1M~5M
40GBASE Ethernet Link
Data Center Networking
Network storage systems

P/N : 2709-03XXX

100G QSFP28 SR4 Transceiver,
Hot Pluggable, MPO/MTP-12C,
850nm VCSEL, Multi-Mode,
100M(OM4)/70M(OM3), DDM
100GBASE-SR4 Ethernet Link
Data Center Networking

● Light-LINKS™ Fiber Optic Cabling System



19" Fiber Optic Rack Mount Enclosure

- Each enclosure features front and rear removable metal covers for quick installation and maintenance

Fiber Optic Distribution Box

- PC+ABS material used ensures the body is strong and light
 - Water proof and dust proof for outdoor application
- Temperature: -40°C~ 60°C

Rack Mount Enclosure



P/N : 2201-24XXX (1U)
P/N : 2201-48XXX (2U)

19" EIA rack mount enclosure, both fixed and sliding type. 1U 24/48 ports, 2U 48/96 ports, come with front cover & splice tray. ST/ SC/ LC adapters are ordered separately.

19" Patch Panel



P/N : 2210-24XXX (SC)
P/N : 2210-48XXX (LC)

19" EIA rack mount patch panel, body material is plastic ABS, light and impact-resistant. 1U 24/48 ports, fixed and sliding type, SC/LC adapters · splice tray& shrinkable sleeves included.

Quick Connector



P/N : 2106-020XX (LC type)
P/N : 2106-02005 (SC type, SM)
P/N : 2106-02013 (SC type, MM)

No tool or jig is required. Accepts 250um/ 900um/ 2.0mm/ 3.0mm fiber.

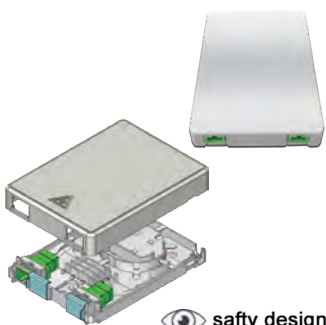
Mechanical Splice



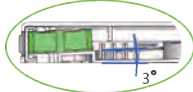
P/N : 6100-00012

No epoxy needed. The splice connection can be seen by fiber checker immediately. Insertion loss 0.1dB, accept both 250 and 900um fiber.

FTTH Termination Box



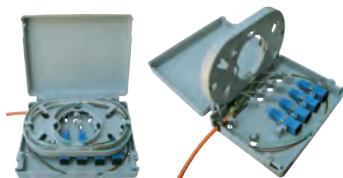
safty design



P/N : 1309-01XXX

FTTH Termination Box, Accommodates 2 fibers with SC adapters. Dimension L*W*D: 114*84*18mm

4P Termination Box



P/N : 1309-01002

Mini Termination Box, Ideal for FTTH Accommodates 4 fibers with SC adapters. Dimension L*W*D: 152*30*112mm Weight : 154g

Outdoor Distribution Box



P/N : 2203-08021 (8 cores)

Outdoor Fiber Optic Distribution Box, accommodates 8 fibers with SC/LC adapters. Dimension L*W*D: 220*205*55mm Weight : 1KG

Outdoor Distribution Box



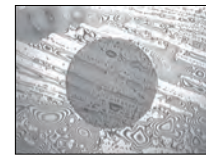
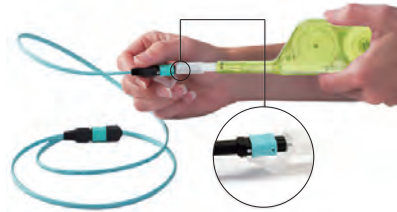
P/N : 2203-16021 (16 cores)

Outdoor Fiber Optic Distribution Box, accommodates 16 fibers with SC/LC adapters. Dimension L*W*D: 300*225*100mm Weight : 1.5KG

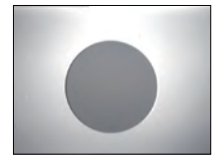
● Light-LINKS™ Fiber Optic Cabling System



DINTEK provides a complete set of fiber optic tools which can help you effectively discover and solve problems in short time.



BEFORE



AFTER

Fusion Splicer

Power Meter/Light Source

OTDR

Cleaver / Stripper



P/N : 6106-09XXX

Applicable Optical Fiber Diameter:
Cladding diameter: 90~150µm,
Coating diameter: 125~1000µm
Average using Splice Loss:
0.02dB (SM) · 0.01dB (MM)
Fusion Splice Duration Time:
9sec (typical)/ 7sec (fast mode)



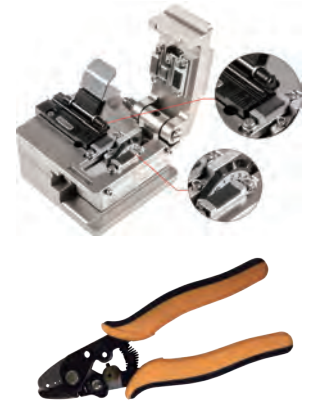
P/N : 6202-01XXX (OPM)
Measurement Range (dBm)
-70~+6
Optical Connector type
FC,SC,ST interchangeable

P/N : 6202-02XXX (OLS)
Operating wavelength (nm)
1310/1550;1310/1490/1550/1625



P/N : 6202-03XXX

Integrated design, smart and rugged IP65 protection level, outdoor enhanced
7-inch anti-reflection LCD screen
Support multi-language display



P/N : 6100-00XXX (cleaver)
High Precision Fiber Cleaver
Cutting angle: ≤0.5°
Blade life: 48000 times

P/N : 6100-00030
Fiber Stripper (0.25/ 0.9/ 3.0)
Length: 162mm
Weight: 118g

Cleaner 2.5/1.25/MPO

Cleaning Box

Inspection Probe

Visual Fault Locator



P/N : 6100-01001 (SC/FC/ST)
P/N : 6100-02001 (LC)
P/N : 6100-03001 (MTP/MPO)

Easy pushing motion engages connector and initiates cleaner
Disposable with 800+ cleanings
Made from anti static resin



P/N : 6100-04001

Suitable for connector such as SC/ FC/ MU/ LC/ ST/ D4/ DIN etc.
alcohol free superfine fiber tape
Tape made of high density textile fibers
Cleaning repetitions 500+
Easy to replace the tape
Level of cleaning is 100%



P/N : 6100-06001

Standard Package:
Inspection Probe x1
3.5" monitor x1
25-U-M x1, 125-U-M x1
25-U-F x1, LC-U-F x1
Cleaner 2.5 x1, 1.25 x1
Recharger ; Manual ;
Handy box ; Li Battery



P/N : 6100-07001 (SC/FC/ST)

The visual fault locator combines the functions of fault locator and power meter.
Wavelength: 650 nm LD
Interface: 2.5mm (SC/FC/ST)
Power: Two AA Batteries >200hrs