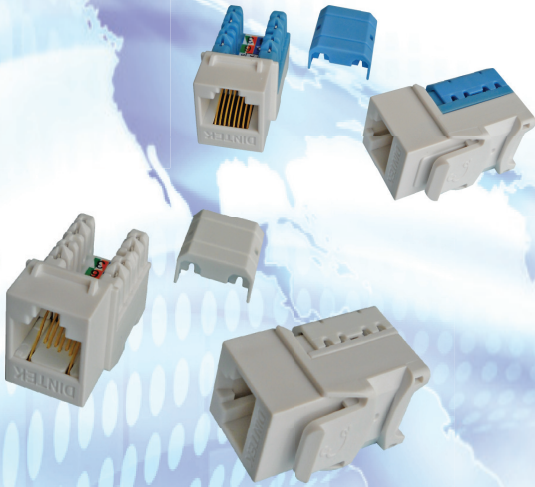


DINTEK Multi-Jack E-Tool™ System



Do you spend too much time fitting off keystones?

Life would be much simpler if you could fit off either cat5e or cat6 keystones with one tool that terminates wires and cuts off trim in one action.

DINTEK has the solution...

Introducing The new E-Tool™ Connection Products from DINTEK Electronic Ltd.

The DINTEK E-Tool™ system is an all-in-one punch down and wire trim process, design to assure even connections, better performance and faster fit off times.

The products in the E-Tool system comprise 90degree and 180degree Cat5e and Cat6 modular keystone jacks, as well as the universal DINTEK E-Tool for termination.

The jacks work with either the E-Tool or a standard 110 style DINTEK punch down tool, this avoiding the need to have two different style of jacks.

KEY FEATURES

- All-in-one Punch down and wire trim process
- Multi use E-Jacks (Keystones), can be used in E-Tool and also standard punch down tool
- E-Tool can be used for either Cat5e or Cat6 Keystone E-Jacks
- Jacks can be inserted either side of E-Tool

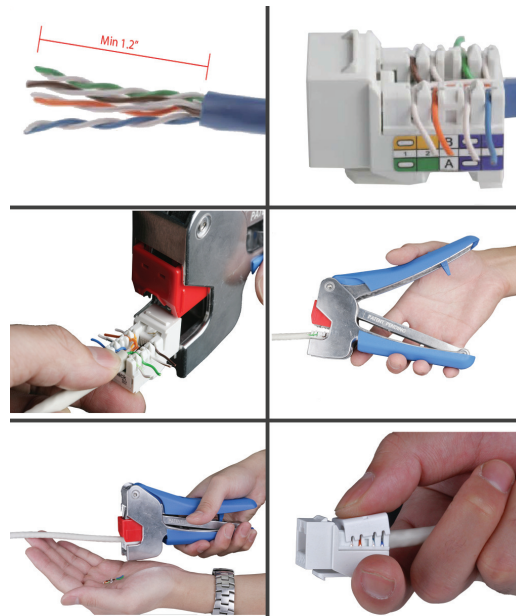
APPLICATIONS

- For use in DINTEK cat5e or cat6 Installations
- Ideal for saving time and maximizing profit

SPECIFICATIONS

- IDC connector accepts 22-26 AWG solid wire
- Jack wiring: 50 u" gold plated over 100 u" nickel
- Housing: High impact flame retardant plastic
- UL94V-0 rated
- IDC connector suitable for E-Tool And 110 Tool
- Plug insertion life:750 cycle min.
- Plug retention force:30 lbs min.
- Current rating: 1.5 Amps
- Insulation resistance: 500Mega-ohms min.
- Contact resistance: 20 milli-ohms max.
- DC resistance: 0.1 ohms max.
- Transmission quality verified up to 250MHz

INSTRUCTIONS



ORDERING INFORMATION

1305-04017	90 Degree Category 6 E-Jack
1305-03038	90 Degree Category 5e E-Jack
6103-01005	Multi Jack Crimping E-Tool

E-TOOL SYSTEM

DINTEK High Speed E-TOOL SYSTEM
Category 5e/6 Product Benefits

E-SYSTEM Products exceed all TIA and ISO specifications for Category 5e/6 cabling systems and components

• They have been Independently confirmed for system performance

- Meets FCC parts 68
- ANSI/TIA 568-C.2
- ISO/IEC 11801

• DINTEK E-SYSTEM products can be warranted for 25 years

• E-SYSTEM products are Interoperable with DINTEK and other standards compliant products

• E-SYSTEM products are available In Cat5e and Cat6 versions

• Independently been confirmed for Gigabit Ethernet applications

• Having a single vendor solution ensures best system performance

• Our products meet or exceed performance requirements for existing and proposed high-speed network applications including:

-Gigabit Ethernet

-622 Mbps & 1.2 Gbps ATM

-Digital & Analog Broadband Video

-Internets/Intranets

-High-End Multimedia

-Voice-over IP (VoIP)

Cat6 Performance Requirements

Frequency (MHz)	Insertion Loss Max. dB @ 10m	NEXT Min. dB	EXT Min. dB	Return Loss Min. dB
1.00	0.10	75.00	75.00	30.00
4.00	0.10	75.00	71.10	30.00
8.00	0.10	75.00	65.00	30.00
10.00	0.10	74.00	63.10	30.00
16.00	0.10	69.90	59.00	30.00
20.00	0.10	69.00	57.10	30.00
25.00	0.10	66.00	55.10	30.00
31.25	0.11	64.00	53.20	30.00
62.50	0.16	59.10	47.20	28.10
100.00	0.20	54.00	46.10	24.00
200.00	0.28	48.00	37.10	18.00
250.00	0.32	46.00	35.10	16.00